



QUICK LINE SYSTEM



Compressed Air Distribution Systems

aircom
PIPINGSYSTEM

AIR IS OUR FUTURE



Fire behaviour

All components with self-extinguishing features, without flame propagation.

EN 13501-1:2007+A1:2009
EN ISO 11925-2:2010
EN ISO 13823:2010

High system flexibility

Our products were designed to create complete distribution systems for compressed air and pressurized fluids. They enable easy future system expansions and can also be connected to already existing systems owing to their high versatility.

CE compliance

All products meeting 97/23/EC directive.

10-year-warranty

In line with high quality level of performances of Aircom's products, Aircom offers on its products a 10-year warranty against any defective material in Aircom's aluminium pipes and fittings.

For more information, please refer to Aircom's Liability Terms.



RINA



Qualanod



Aluminium Pipe



CODE	ø (5,8 m) BLUE
QLTUAL020S	20
QLTUAL025S	25
QLTUAL032S	32
QLTUAL040S	40
QLTUAL050S	50
QLTUAL063S	63
QLTUAL080S	80
QLTUAL110S	110



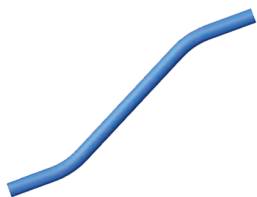
CODE	ø (4 m) BLUE
QLTUAL4016S	16
QLTUAL4020S	20
QLTUAL4025S	25
QLTUAL4032S	32
QLTUAL4040S	40
QLTUAL4050S	50
QLTUAL4063S	63



CODE	ø (5,8 m) GREY
QLTUALGY020S	20
QLTUALGY025S	25
QLTUALGY032S	32
QLTUALGY040S	40
QLTUALGY050S	50
QLTUALGY063S	63
QLTUALGY080S	80



CODE	ø (5,8 m) GREEN
QLTUALG020S	20
QLTUALG025S	25
QLTUALG040S	40
QLTUALG063S	63



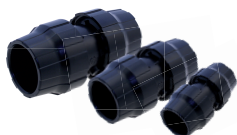
Double bend, aluminium

CODE	ø (0.5m) BLUE
QLSCI016	16
QLSCI020	20
QLSCI025	25



Coupling

CODE	Ø
QLMAAL020	20
QLMAAL025	25
QLMAAL032	32
QLMAAL040	40
QLMAAL050	50
QLMAAL063	63
QLMAAL080	80
QLMAAL110	110



Sliding coupling

CODE	Ø
QLMASAL032	32
QLMASAL040	40
QLMASAL050	50
QLMASAL063	63
QLMASAL080	80



90° Elbow

CODE	Ø
QLGO90AL020	20
QLGO90AL025	25
QLGO90AL032	32
QLGO90AL040	40
QLGO90AL050	50
QLGO90AL063	63
QLGO90AL080	80
QLGO90AL110	110



45° Elbow

CODE	Ø
QLGO45AL020	20
QLGO45AL025	25
QLGO45AL032	32
QLGO45AL040	40



45° Elbow, male threaded

CODE	Ø
QLGO90MAL020048	20x1/2"
QLGO90MAL025048	25x1/2"
QLGO90MAL025068	25x3/4"

* Available in NPT version



End cap

CODE	Ø
QLCAAL020	20
QLCAAL025	25
QLCAAL032	32
QLCAAL040	40
QLCAAL050	50
QLCAAL063	63
QLCAAL080	80



Reducing Tee

CODE	Ø
QLTRAL025020	32x20
QLTRAL032020	25x20
QLTRAL040020	40x20
QLTRAL040025	40x25



Tee

CODE	Ø
QLTEAL020	20
QLTEAL025	25
QLTEAL032	32
QLTEAL040	40
QLTEAL050	50
QLTEAL063	63
QLTEAL080	80
QLTEAL110	110



Threaded tee, female thread

CODE	Ø
QLTPAL020048	20x1/2"
QLTPAL025068	25x3/4"
QLTPAL032088	32x1"
QLTPAL040108	40x1.1/4"
QLTPAL050128	50x1.1/2"
QLTPAL063168	63x2"
QLTPAL080208	80x2.1/2"
QLTPAL110248	110x3"

* Available in NPT version



Flanged coupling (DIN flange)

CODE	Ø
QLMFLAL063168DIN	63x2"
QLMFLAL080248DIN	80x3"
QLMFLAL110328DIN	110x4"

* Available in ANSI version

Nipple socket, male threaded



CODE	Ø
QLMNMAL020048	20x1/2"
QLMNMAL020068	20x3/4"
QLMNMAL025068	253/4"
QLMNMAL025088	25x1"
QLMNMAL032108	32x1.1/4"
QLMNMAL040128	40x1.1/2"
QLMNMAL050168	50x2"
QLMNMAL063168	63x2"
QLMNMAL063208	63x2.1/2"
QLMNMAL080208	80x2.1/2"
QLMNMAL080248	80x3"

* Available in NPT version

Nipple socket, female threaded



CODE	Ø
QLMPMAL020048	20x1/2"
QLMPMAL020068	20x3/4"
QLMPMAL025068	253/4"
QLMPMAL025088	25x1"
QLMPMAL032108	32x1.1/4"
QLMPMAL040128	40x1.1/2"
QLMPMAL050168	50x2"
QLMPMAL063168	63x2"
QLMPMAL063208	63x2.1/2"

* Available in NPT version



Coupling



CODE	Ø
QLMAPA016	16
QLMAPA020	20
QLMAPA025	25
QLMAPA032	32
QLMAPA040	40
QLMAPA050	50
QLMAPA063	63

Sliding coupling



CODE	Ø
QLMASPA032	32
QLMASPA040	40
QLMASPA050	50
QLMASPA063	63

90° Elbow



CODE	Ø
QLGO90PA016	16
QLGO90PA020	20
QLGO90PA025	25
QLGO90PA032	32
QLGO90PA040	40
QLGO90PA050	50
QLGO90PA063	63

45° Elbow



CODE	Ø
QLGO45PA020	20
QLGO45PA025	25
QLGO45PA032	32
QLGO45PA040	40
QLGO45PA050	50
QLGO45PA063	63



90° elbow, male thread

CODE	Ø
QLGO90PM020048	20x1/2"
QLGO90PM025048	25x1/2"
QLGO90PM025068	25x3/4"

* Available in NPT version

End cap



CODE	Ø
QLCAPA016	16
QLCAPA020	20
QLCAPA025	25
QLCAPA032	32
QLCAPA040	40
QLCAPA050	50
QLCAPA063	63

Union, male threaded



CODE	Ø
QLMNPA016048	16x1/2"
QLMNPA020048	20x1/2"
QLMNPA020068	20x3/4"
QLMNPA025048	25x1/2"
QLMNPA025068	25x3/4"
QLMNPA025088	25x1"
QLMNPA032088	32x1"
QLMNPA032108	32x1.1/4"
QLMNPA040088	40x1"
QLMNPA040108	40x1.1/4"
QLMNPA040128	40x1.1/2"
QLMNPA050128	50x1.1/2"
QLMNPA050168	50x2"
QLMNPA063168	63x2"

* Available in NPT version

Tee



CODE	Ø
QLTEPA016	16
QLTEPA020	20
QLTEPA025	25
QLTEPA032	32
QLTEPA040	40
QLTEPA050	50
QLTEPA063	63

Reducing Tee



CODE	Ø
QLTRPA020016	20x16
QLTRPA025016	25x16
QLTRPA025020	25x20
QLTRPA032020	32x20
QLTRPA032025	32x25
QLTRPA040020	40x20
QLTRPA040025	40x25
QLTRPA040032	40x32
QLTRPA050020	50x20
QLTRPA050025	50x25
QLTRPA050032	50x32
QLTRPA050040	50x40
QLTRPA063020	63x20
QLTRPA063025	63x25
QLTRPA063040	63x40
QLTRPA063050	63x50



Threaded tee, female thread

CODE	Ø
QLTPPA020048	20x1/2"
QLTPPA025048	25x1/2"

* Available in NPT version

Reduction



CODE	Ø
QLRIDPA025020	25x20
QLRIDPA032025	32x25
QLRIDPA040025	40x25
QLRIDPA040032	40x32
QLRIDPA050040	50x40



Single port manifold, female threads

CODE	Ø
DIRAPMAL048048	1/2"x1/2"

* Available in NPT version



Single port manifold, female threads (with fitting holder safety block)

CODE	Ø
DIRAPGO45FAL020048	20x1/2"
DIRAPGO45FAL025048	25x1/2"
DIRAPGO45FAL025068	25x3/4"

* Available in NPT version

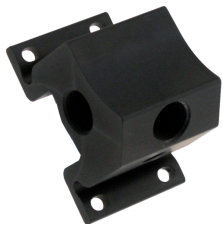


Double port manifold, female threads

CODE	Ø
APLAL048	1/2"x1/2" (x2)
APLAL068	3/4"x1/2" (x2)

* Available in NPT version

* Drain 1/4" for discharge valve (blind)



Three port manifold, female threads

CODE	Ø
DIRAPFRLAL048048	1/2"x1/2"(x3)

* Available in NPT version

* Drain 1/4" for discharge valve (blind)



Four port manifold, female threads

CODE	Ø
DIRAPLAL048048	1/2"x1/2"(x4)
DIRAPLAL068068	3/4"x1/2"(x2) - 3/4"(x2)

* Available in NPT version

* Drain 1/4" for discharge valve (blind)



Five port manifold, female threads

CODE	Ø
DIRPMUAL120	3/4"x1/2"(x3) - 3/4"(x2)

- * Available in NPT version
- * Drain 1/4" for discharge valve (blind)



Five port manifold, female threads

CODE	Ø
APLALLMUL068038	3/4"x3/8 (x5)
APLALLMUL068048	3/4"x1/2"(x4)

- * Available in NPT version



Seven port manifold, female threads

CODE	Ø
DIRPMUAL200	3/4"x1/2"(x5) - 3/4"(x2)

- * Available in NPT version
- * Drain 1/4" for discharge valve (blind)





Quick branch plug, hr-polymer screw nut

CODE	Ø
QLDERPA025016	25x16
QLDERPA025020	25x20
QLDERPA032016	32x16
QLDERPA032020	32x20
QLDERPA040016	40x16
QLDERPA040020	40x20
QLDERPA040025	40x25
QLDERPA050016	50x16
QLDERPA050020	50x20
QLDERPA050025	50x25
QLDERPA063020	63x20
QLDERPA063025	63x25
QLDERPA063032	63x32
QLDERPA080020	80x20
QLDERPA080025	80x25
QLDERPA080032	80x32
QLDERPA110025	110x25
QLDERPA110032	110x32



Quick branch plug, female thread outlet

CODE	Ø
DIRDERFF025048	25x1/2"
DIRDERFF032048	32x1/2"
DIRDERFF040048	40x1/2"
DIRDERFF040068	40x3/4"
DIRDERFF050048	50x1/2"
DIRDERFF050068	50x3/4"
DIRDERFF063048	63x1/2"
DIRDERFF063068	63x3/4"
DIRDERFF063088	63x1"
DIRDERFF080048	80x1/2"
DIRDERFF080068	80x3/4"
DIRDERFF080088	80x1"
DIRDERFF110068	110x3/4"
DIRDERFF110088	110x1"

* Available in NPT version

Quick branch plug, aluminium screw nut



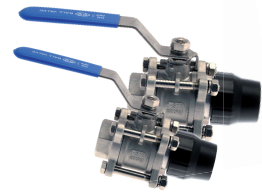
CODE	Ø
QLDERAL025020	25x20
QLDERAL032020	32x20
QLDERAL040020	40x20
QLDERAL040025	40x25
QLDERAL050020	50x20
QLDERAL050025	50x25
QLDERAL063020	63x20
QLDERAL063025	63x25
QLDERAL063032	63x32
QLDERAL080020	80x20
QLDERAL080025	80x25
QLDERAL080032	80x32
QLDERAL110025	110x25
QLDERAL110032	110x32





Quick Line SS ball valve with integrated QL connectors

CODE	Ø
QLVAINOX025	25
QLVAINOX032	32
QLVAINOX040	40
QLVAINOX050	50
QLVAINOX063	63
QLVAINOX080	80



Quick Line SS ball valve with integrated QL connector and female threaded end

CODE	Ø
QLVAINOXF025088	25x1"
QLVAINOXF032128	32x1.1/2"
QLVAINOXF040128	40x1.1/2"
QLVAINOXF050168	50x2"
QLVAINOXF063168	63x2"
QLVAINOXF080248	80x3"



Butterfly valve with integrated QL connectors

CODE	Ø
QLVALFAR110	110



Quick Line dropleg ball valve, male threaded (nickel plated brass)

CODE	Ø
* QLVAM016048	16x1/2"
QLVAM020048AL	20x1/2"
QLVAM025068AL	25x3/4"

Available in NPT version

* screw nut in HR-Polymer



Quick Line dropleg ball valve, female threaded (nickel plated brass)

CODE	Ø
* QLVAF016048	16x1/2"
QLVAF020048AL	20x1/2"
QLVAF025068AL	25x3/4"

Available in NPT version

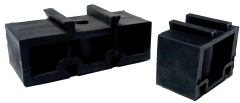
* screw nut in HR-Polymer

Brackets, with M8 thread insert piece



CODE	Ø
DIRFEM8016CF	16
DIRFEM8020CF	20
DIRFEM8025CF	25
DIRFEM8032CF	32
DIRFEM8040CF	40
DIRFEM8050CF	50
DIRFEM8063CF	63
DIRFEM8080CF	80
DIRFEM8110CF	110

Spacers



CODE	Ø
DIRSPE020032	20-32
DIRSPE040063	40-63



Fittings holder for aluminium fittings

CODE	Ø
DIRFERRAC020CF	20
DIRFERRAC025CF	25

Flexible expansion compensator hose



CODE	Ø
QLFLEX020	20
QLFLEX025	25
QLFLEX032	32
QLFLEX040	40
QLFLEX050	50
QLFLEX063	63

Male threaded spigot (aluminium)



CODE	Ø
QLPUNM016038	16 x 3/8"
QLPUNM020048	20 x 1/2"
QLPUNM020068	20 x 3/4"
QLPUNM025088	25 x 1"
QLPUNM032108	32 x 1.1/4"
QLPUNM040128	40 x 1.1/2"
QLPUNM050168	50 x 2"
QLPUNM063168	63 x 2"
QLPUNM080248	80 x 3"

* Available in NPT version



Reduction pipe, male/male connection

CODE	Ø
QLRIDTU025020	25x20
QLRIDTU032020	32x20
QLRIDTU032025	32x25
QLRIDTU040025	40x25
QLRIDTU040032	40x32
QLRIDTU050032	50x32
QLRIDTU050040	50x40
QLRIDTU063040	63x40
QLRIDTU063050	63x50
QLRIDTU080050	80x50
QLRIDTU080063	80x63
QLRIDTU110050	110x50
QLRIDTU110063	110x63
QLRIDTU110080	110x80



Straight transition fitting

CODE	Ø
QLADAIRTRANS160165	16x16,5
QLADAIRTRANS200165	20x16,5
QLADAIRTRANS025025	25x25
QLADAIRTRANS040040	40x40
QLADAIRTRANS050050	50x50
QLADAIRTRANS063063	63x63
QLADAIRTRANS080076	80x76
QLADAIRTRANS110100	110x100



Concentric reduction, male/female threaded

CODE	Ø
QLRIDMF048038	1/2"x3/8"
QLRIDMF068048	3/4"x1/2"
QLRIDMF068038	3/4"x3/8"
QLRIDMF088068	1"x3/4"
QLRIDMF088048	1"x1/2"
QLRIDMF108088	1.1/4"x1"
QLRIDMF108068	1.1/4"x3/4"
QLRIDMF108048	1.1/4"x1/2"
QLRIDMF128108	1.1/2"x1.1/4"
QLRIDMF128088	1.1/2"x1"
QLRIDMF128068	1.1/2"x3/4"
QLRIDMF128048	1.1/2"x1/2"
QLRIDMF168128	2"x1.1/2"
QLRIDMF168108	2"x1.1/4"
QLRIDMF168088	2"x1"
QLRIDMF208088	2.1/2"x2"
QLRIDMF208168	2.1/2"x2"
QLRIDMF248208	3"x2.1/2"



Flanged tip, DIN flange

CODE	Ø
QLTFLAL080248DIN	80x3"
QLTFLAL110328DIN	110x4"

* Available in ANSI version



Quick Line nut wrench for hr-polymer fittings

CODE	Ø
QLCLE016020	16-20
QLCLE025032	25-32
QLCLE040050	40-50
QLCLE063	63



QL nut wrench for aluminium fittings

CODE	Ø
QLCLEAL020025	20-25
QLCLEAL032040	32-40
QLCLEAL050	50
QLCLEAL063	63
QLCLEAL080	80



Holding tool for aluminium fittings bodies

CODE	Ø
QLCPR020	20
QLCPR025	25
QLCPR032	32
QLCPR050	50



Chamfering tool

CODE	Ø
DIRSM016050	16-50
DIRSM063110	63-110



Threaded flange

CODE	Ø
DIRFLFF168DIN	63
DIRFLFF248DIN	80
DIRFLFF328DIN	110

* Available in ANSI version



Pipe-fittings insertion meter for HR-Polymer fittings

CODE	Ø
QLMIS016063	16-63

Pipe-fittings insertion meter for Aluminium fittings

CODE	Ø
QLMISAL020110	20-110



Flanged expansion compensator (DIN flange)

CODE	Ø
DIRDIL063DIN	63
DIRDIL080DIN	80
DIRDIL110DIN	110

* Available in ANSI version



QUICK

With Quick Line product line you can reduce installation time by about 45% compared to traditional systems.

EASY

Owing to innovative Quick Line technology, easy-mounting pipe assembly and direct connection fittings will enable you to create your piping system in few, easy steps.

RELIABLE

Durability and corrosion resistance of our products provide you a unique, comprehensive system.

Careful study and design of shapes and of materials also grant extremely low pressure drops without air leakages, with resulting remarkable energy savings.

AIRCOM s.r.l
via Trattato di Maastricht
15067 Novi Ligure (AL) - ITALY
Ph. +39 0143 329502 - Fax +39 0143 358175

www.aircomsystem.com
info@aircomsystem.com